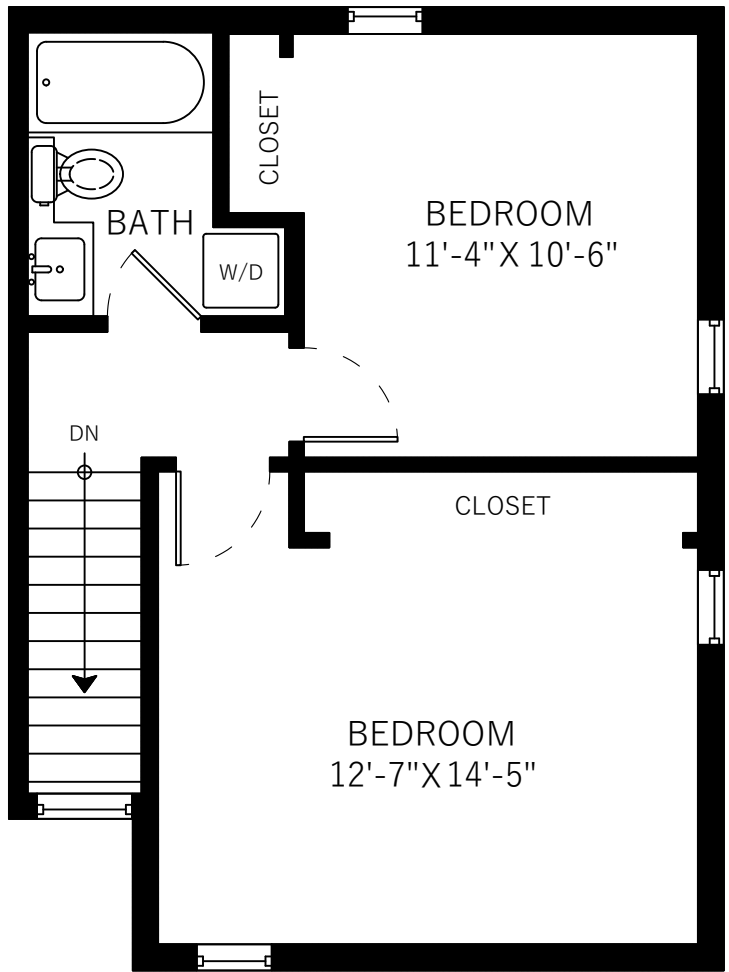
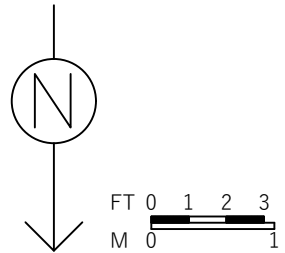


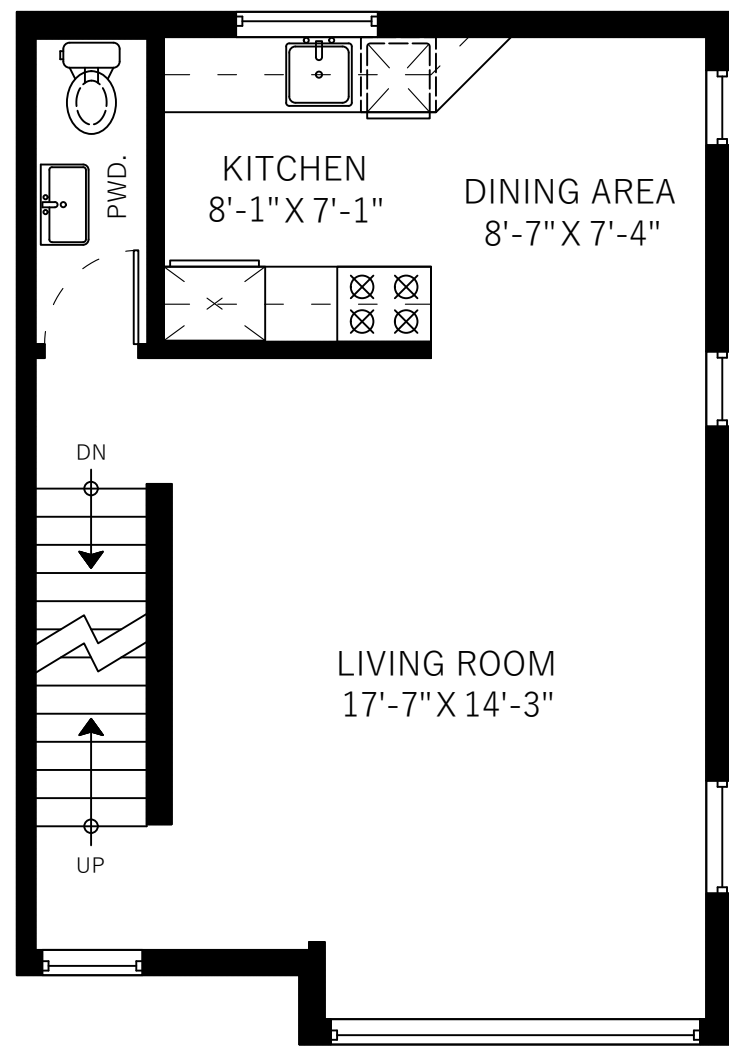
1216 W 12th Ave
Vancouver, BC

Main Floor	511 SQ.FT.
Upper Floor	476 SQ.FT.
Lower Floor	45 SQ.FT.
Total	1032 SQ.FT.

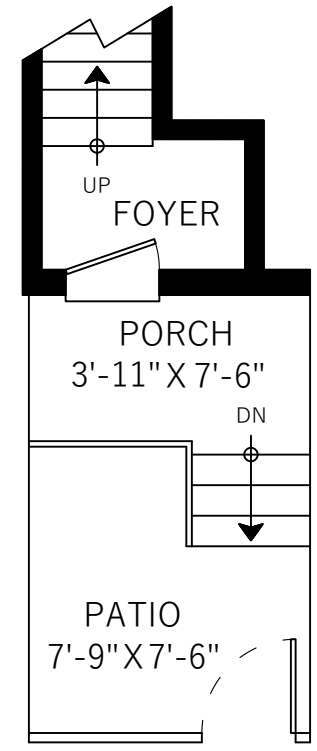
Patio	50 SQ.FT.
Porch	31 SQ.FT.
Total Extras	81 SQ.FT.



Upper Floor: 476 Sq.Ft.
Ceiling Height: 8'



Main Floor: 511 Sq.Ft.
Ceiling Height: 8'



Lower Floor: 45 Sq.Ft.